



Waverley Country Club

THE CURRENT

September 2022



Fall Fashion
Show
September 15

Blyth Tournament &
Annual Meeting
September 24

Dine & Dash
Club Party
September 30



Hours of Operation

Field House/Simulator Room

Monday | 8:00 am - 4:00 pm

Tuesday - Sunday | 7:00 am - 7:00 pm

Golf Course

Monday | 10:00 am - Dusk

Tuesday - Thursday | 8:00 am - Dusk

Friday - Sunday | 7:30 am - Dusk

Bag Room

Monday - Sunday | 7:00 am - Dusk

Driving Range

Monday | 9:00 am - Closes 2 hours prior to sunset

Tuesday - Sunday | 7:00 am - Dusk

Daily Course Availability and Tournament Results available on the Club's app and website.

Turn Bar

Daily | 10:00 am - Dusk

Men's Bar

Wednesday - Sunday | 11:00 am - 8:00 pm

Grille Breakfast

Saturday | 6:30 am - 11:00 am

Grille Brunch

Sunday | 9:00 am - 3:00 pm

Riverside/Grille Lunch

Tuesday - Saturday | 11:00 am - 3:00 pm

Riverside/Grille Dinner

Wednesday - Sunday | 5:00 pm - 9:00 pm

Gap Menu

Tuesday - Sunday | 3:00 pm - 5:00 pm

Reservations are suggested for lunch and required for dinner, and may be made on the Club's app/website or by contacting the Front Desk at 503.654.6521. Guests are welcome for lunch and dinner.

2021 - 2022 BOARD OF DIRECTORS & COMMITTEES

Linda Williams | *President*

Jeff Jorgenson | *Vice President | House*

William Swindells | *Vice President | Green*

Steve Reaume | *Secretary | Tournament*

T.J. McConville | *Treasurer | Finance*

Jim Carter | *Field House*

Wayne Drinkward | *Long Range Planning*

Nick Ehlen | *Membership Enhancement*

Kevin Lynch | *Membership*

2021 - 2022 WOMEN'S BOARD OF GOVERNORS

Nancy Herpers | *President*

Bridget Otto | *Vice President*

Julie Carter | *Secretary*

Kristen Kohnstamm | *Treasurer*

Tracy Stoloff | *Program*

Ann Johnson | *Assistant Program*

Marjorie Kerr | *Hospitality*

Leslie Nevius | *Junior Activities*

Katy Williams | *Assistant Junior Activities*

Karen Holce | *9-Hole Team Captain*

Diane Tucker | *9-Hole Assistant Team Captain*

Wendy Keeton | *18-Hole Team Captain*

Liz Howells | *18-Hole Assistant Team Captain*

SENIOR STAFF

Larry Batchelor | *Maintenance Director*

larry.batchelor@waverley.cc

Mindy Becker | *Human Resources Director*

mindy.becker@waverley.cc

Lori Hennessy | *Membership Development Director*

lori.hennessy@waverley.cc

Kathy Jennings | *Controller*

kathy.jennings@waverley.cc

Colleen Kenny | *Food and Beverage Director*

colleen.kenny@waverley.cc

Brian Koffler | *Green Superintendent*

brian.koffler@waverley.cc

Jennifer Novak | *Events Director*

jennifer.novak@waverley.cc

Jim Schaeffer | *PGA Head Golf Professional*

jim.schaeffer@waverley.cc

Christian Thon | *COO/General Manager*

christian.thon@waverley.cc

Juan Zaragoza | *Executive Chef*

juan.zaragoza@waverley.cc

In Memoriam

William Perrin



Message from the President Linda Williams

Dare I begin my final column with what I believe is an appropriate way to transition while also saluting the 125th Anniversary of our Club AND the August 6 GALA?!

A core value:

Appreciating Waverley's History and Tradition

A common theme among America's finest golf & country clubs is member knowledge of the institution's history and the respect shown for their traditions. Waverley's rich history is visible in displays throughout the Club. Members have the ongoing responsibility to record and honor the history and tradition of our Club.

The 125th Anniversary Gala honoring this rich history was INCREDIBLE! Creativity, celebratory, and fun is the best way to describe it. From the clever invitations and event format to the over-the-top food selection, as well as the service, the vibe, the multi-faceted celebration, the attire, the 300+ celebrants, the DJ, the polo ponies, the bagpipes, the golf ball framed "W!" You get it...

There are a lot of thanks due for the success of this event. To the 125th Gala Committee - Ann Johnson, Bridget Otto, Nicole Miller, Leslie Nevius, Sara Stewart, and Sally Elorriaga; to our dedicated, talented, and pleasant staff; and all of you. It was beautiful, and we are fortunate.

It is budget time. Our COO, Christian Thon, and his team, alongside the Finance Committee, led by Director T.J. McConville, have devoted much time, energy, and brain power to fully understand a series of complexities relating to today's economic environment. Member satisfaction, Club traditions, delivery of excellence, fiscal responsibility, and prosperity are at the top of the list of objectives. It is challenging to say the least. Later in September, messaging and specifics will be communicated following budget approval by the Board of Directors.

In the spirit of ongoing communications about our work at the Board level, Long Range Planning Chair, Wayne Drinkward, will report later in this issue with an update on committee progress to date.

To all, it has been an extraordinary experience and gift for me over the last three years, serving as a Club Director and then Club President. Thank you for the honor. I am also honored and grateful to have served this past year with an extraordinary Board of Directors who skillfully came together to work effectively from moment one. Please thank them for their resolute and thoughtful service this past year when you have a moment: my "class" of Jeff Jorgenson and Bill Swindells, and the rest of the Board - Jim Carter, Wayne Drinkward, Nick Ehlen, Kevin Lynch, T.J. McConville, and Steve Reaume. They are the best!

All good wishes to you for an outstanding September, and I look forward to seeing many of you at our Annual Meeting on September 24.



Waverley Gate

We have activated the Security Gate, and if you haven't already done so, we are requesting that you provide us with license plate numbers for your vehicles. Please stop by the Field House or Clubhouse to complete a form with your license plate information, or call the Front Desk and provide the required information. Alternatively, you can scan the QR code, complete the information on the form, and hit "submit." Should the gate not open for you, please use the keypad for entrance by entering: *your 4-digit code#



Message from the Long Range Planning Committee Wayne Drinkward

The Long Range Planning Committee has been working over the past few months to develop a more comprehensive look at the capital investment we will require as a Club to maintain and improve our service and member satisfaction levels over the next ten or more years. These improvements include two general categories, one to sustain our current operations and a second to consider where we may remodel or add to our existing fine facilities to keep them relevant and responsive to members.

The first category of sustaining capital expenditures are those areas constantly being upgraded or replaced but do not significantly change our current facility. This includes equipment replacement, major course repairs, and the anticipated rework of our driving range. These are typically funded out of new member initiation fees and are not brought forward to the membership. They are part of keeping our facilities fresh and functional.

The second area includes several potential projects that may include remodeling or new structures that expand or improve our services to create greater membership satisfaction, stay current with industry trends, and respond to the feedback we have accumulated over the years. We are finalizing some preliminary high-level concepts for four areas of the Club. These include the Field House and Driving Range, the Pool, Riverside Dining, the North Lawn and Terrace Patio, and a potential fitness area with better services for tennis and pickleball. These projects are all relatively individual and include several small elements. While they could be done at one time, they are easily broken into smaller pieces to minimize disruption and can be done over a period of years. It is hoped that if we make improvements over a period of time, the master plan roadmap within these concepts will help us spend wisely and achieve long-term results that are greater than the sum of their parts.

For example, the Field House area adjacent to the Driving Range includes elements such as covered hitting bays for winter use, instructional bays with technology for better teaching, some simulator presence for individual or social use, and the presence of food and beverage service. We are also looking to improve the operational efficiency for the Bag Room and Cart Barn and provide a better place for seasonal furniture storage that now occurs in rented Conex containers. The intent is to provide a functional and social area that better serves our membership in engaging with each other and improving their game.

Additionally, improvements to enhance member engagement will likely involve some form of capital assessments, which will vary depending on the scope and timing of the projects to be considered. The Board of Directors has made no commitments on any of them, pending your feedback. However, we intend to begin sharing the concepts and their potential financial aspects with the membership this fall. After that, there will likely need to be a membership vote on whatever proposal the Board feels best reflects both the feedback and the Club's long-term interests.

Our target is to have whatever projects we deem to be appropriate ready to proceed after the conclusion of next summer's USGA Senior Women's Open event. We think you will find the proposed work exciting and engaging, and look forward to having that conversation with you this fall and winter.



Message from the Women's Board of Governors President Nancy Herpers

Summertime is a very busy time at Waverley! The swimming pool is a great place for lessons and lounging. Golf is at

its peak with women's play on 18-Hole Tuesdays and 9-Hole Wednesdays - incredible events planned by those groups, and of course, many rounds of golf played throughout the week. Riverside dining is the "coolest" spot in town for lunch and dinner. Our Executive Chef, Juan, and Pastry Chef, Cathi, have outdone themselves with creative dishes. Not to mention, many of the ingredients are from our Waverley garden. The Clubhouse has a full schedule of parties, weddings, and meetings!

It is important to remember that all of these activities are planned and staffed with you, the membership, in mind. "Staff" is the keyword in my previous sentence. Please take some time when you are at Waverley to thank the staff for what they do! From the executive staff to the kitchen staff, the Front Desk to the communications desk, the Field House staff to the server staff, the lifeguards to the security guards, and the course crew to the housekeeping crew. All these wonderful people deserve a pat on the back and a kind word, especially now when the Club is at its busiest!



Message from the COO/General Manager Christian Thon

I can't believe I am already writing about the end of summer. Times flies when you're having fun - and fun we've had!

The Fourth of July BBQ and Fireworks were a blast. Men's and Women's Invitationals were very successful, the Family Campout and the 125th Anniversary Gala were all huge successes, amongst many other summer events.

Riverside dining this year started off slow due to weather and then got in full swing in July. Our staff was extremely prepared and has shown great work ethic, even on our busiest days. We added Tuesday dinner service Riverside in August this year to give the membership more services, and we plan on serving dinner Tuesday through Sunday all summer next year to give members more dining options.

We received the new exterior furniture for Riverside and the pool, and so far, the feedback has been great. We are still a few items short for the Terrace Patio which should arrive in the next couple of weeks.

Out on the golf course, we added fruit and cheese in fridges on holes #6 and #11. We also installed water and ice machines, but both machines continued to break down and scheduling

repairs has been challenging. We apologize for any frustrations and inconveniences this has caused.

Another of my 'favorite' subjects is the gate. We have installed a hopefully better camera and more efficient software that now picks up more license plates, but it's still not reading specialty plates on a regular basis, so we are out looking for other options to control gate access. We had another incident with trespassers who broke into two vehicles in early August, so make sure not to leave any valuables in sight regardless of where you park, and as they say at the airports; "If you see something (out of the ordinary), say something."

The Green Committee decided to recommend that the big oak tree between the Men's Bar and the Tennis Courts be removed due to the latest incident when a large branch broke off. It was a miracle that nobody was hurt and damage on the facilities was limited. Therefore, the area under the tree canopy has been deemed unsafe, and the tree will be removed as soon as possible.

Finally, I'd like to thank the membership yet again. The last year and a half at Waverley have been very special and I am grateful for your trust and continued support.

Here's to some more great weather, great golf, and outside dining before the rain returns.



Winners Circle

Men's Invitational Champions



James Dalton and Jim Baumgartner

Flight Winners

Flight One:	Ryan Atkinson and Adam Gold
Flight Two:	Patrick Terrell and Brian Little
Flight Three:	James Wells and Mike Daniel
Flight Four:	Spencer Noecker and Brian Francis
Flight Five:	Patrick Clark and Michael Kelso
Flight Six:	Chase Jones and Patrick Dalton
Flight Seven:	Doug Holden and Jim Albaugh
Flight Eight:	William Kimmerle and Will Kimmerle
Flight Nine:	Sam Gruner and Will Gruner
Flight Ten:	Tygue Howland and Jeff Eulberg
Flight Eleven:	Joseph Tennant and John McConnell
Flight Twelve:	Richard Popiel and Austen Popiel

Women's Invitational Champions



Monique Johnsen and Aerin Song

Gucci Flight

First Place Gross:	Gretchen Johnson and Libby Hulsey
First Place Net:	Liz Howells and Erin Munro
Second Place Gross:	Mary Jacobs and Terry Mattson
Second Place Net:	Donna Kinsel and Robin Endres

Prada Flight

First Place Gross:	Jan Hoffman and Betsy Dailey
First Place Net:	Catie Ellis and Michele Gray
Second Place Gross:	Wendy Keeton and Andrea Iverson
Second Place Net:	Kathy Wilson and Kris Elliot

Versace Flight

First Place Gross:	Tracy Moir and Dawn Campbell
First Place Net:	Fran von Schlegell and Lisa Hall
Second Place Gross:	Edie Leonard and Sandy Mulligan
Second Place Net:	Ann Johnson and Janet Ramey



Congratulations on the WIN!

Fourth of July Champion



Bill Reilly, Jr.

President's Cup Champion



Alan Kinsel

34th Oregon Mid-Amateur Championship **Amanda Jacobs**



113th Oregon Amateur Championship **Tye Gabriel**

Hole-in-One!



Chris Jacobs
August 3, Hole #6



Carolyn Forbes
August 10, Hole #9

Hole-in-One Insurance

This insurance pays the bar tab when you make a hole-in-one. Participation is voluntary and covers both the member and spouse. The \$5 fee will be billed as the fund nears depletion. Once you have signed up, the renewal is automatic. Contact the accounting office to register for Hole-in-One Insurance.

Waverley Open

Black Tee Net:	Daniel Hirselj
Black Tee Gross:	Trey Johnson
Blue Tee Net:	Thomas Gustafson
Blue Tee Gross:	Don Ossey
White Tee Net:	John Rosenfeld
White Tee Gross:	Paul Duden

Memorial Day Chapman

Net:	Patrick Clark and Daniel Hirselj
Gross:	Carl Johnsen and Jon Olson

125th Anniversary Tournament

Net:	David Jarman
Gross:	Amanda Jacobs



Women's Golf

Clinics Overview

Tuesdays at 4:00 pm	11-15 Operation 36
Wednesdays at 1:00 pm	Women's Operation 36
Wednesdays at 4:00 pm	7-10 Operation 36
Thursdays at 11:00 am	Determined Golfers
Thursdays at 1:00 pm	Women's Clinic Series
Thursdays at 2:00 pm	Women's Operation 36
Saturdays at 12:00 pm	Junior Golf Academy
Saturdays at 1:00 pm	7-10 Operation 36
Saturdays at 2:00 pm	Men's Operation 36
Sundays at 1:00 pm	1-15 Operation 36
Sundays at 2:00 pm	7-10 Operation 36

Ladies Sticks and Sips

Thursday, September 1 | 5:00 pm

Join us for the final Sticks & Sips of the season! Starting with an easy swing clinic taught by PGA 1st Assistant Professional, Zach Emery. Light snacks and a no-host happy hour will be served.

\$25 per session for the clinic.

Sign up on the website or by calling the Field House.

The Fall Handicap

Tuesday, September 6 | Tee Times 8:00 am - 11:00 am

Format: Individual Net

18-Hole Captain Wendy Keeton Trophy

Tuesday, September 13 | Tee Times 8:00 am - 11:00 am

Format: Individual Net

18-Hole Play Away

Tuesday, September 27 – Wednesday, September 28

Join us for a Ponderosa Pine Play Away at Black Butte Ranch.

Sign up on the website or by calling the Field House.

9-Hole Play Away

Wednesday, September 28

Join us for a coastal beach day in Astoria! Six tee times starting at 1:30 pm.

Sign up on the website or by calling the Field House.

18-Hole Closing and Punchbowl

Tuesday, October 18 | 8:30 am Shotgun for 9-Holes

Format: Scramble

Make your own foursomes or be paired-up upon arrival.

Sign up on the website or by calling the Field House.

Waverley Women's Golf and Annual Meeting

Tuesday, October 25 | 9:00 am Shotgun for 9-Holes

Format: Scramble

Make your own foursomes or be paired-up upon arrival.

Sign up on the website or by calling the Field House.



Member / Spouse Tournament

Sunday, September 4 | 1:30 pm Shotgun

Format: Two Person Chapman

Open and Senior divisions with net and gross winners, both partners must be 60+ to qualify for the Senior division.

Men's Labor Day Event

Monday, September 5 | Tee Times 7:30 am – 11:00 am

Format: 2 Best Balls Net and Gross with individual Net and Gross Winners

Sign up with the Field House to schedule your tee time.
\$25 per person

Member / Employee Tournament

Monday, September 12 | 9:00 am Shotgun | Lunch to follow

Format: 4 Person Net Scramble (2 members and 2 employees)

\$50 per member

The Wood Tournament

Thursday, October 6 | 1:00 pm Shotgun

Format: Alternate Shot

Member/Member or Member/Guest teams



Blyth Tournament

**Saturday, September 24
1:00 pm Shotgun**

Format: Two Better Balls of the Foursome Individual Gross and Net Winners

The low net player/players are the Blyth Champions





Women at the Wave!

Pickleball Group

Every Monday and Thursday
8:30 am - 10:00 am

Email Wendy Rea at wendy.n.rea@gmail.com to register.

Saturday Morning Bridge

Every Saturday | 9:00 am

Join Barbara Beale's group for Saturday Morning Bridge.

Pizza & Pinot

September 1, 8, 15, 22, 29
5:00 pm - 8:00 pm

Reservations required | Casual attire
Full a la carte dinner menu will also be available.

Labor Day BBQ & Festivities

Monday, September 5
4:00 pm Games & activities | 5:00 pm - 7:00 pm Dinner buffet

Join us for fun for the whole family with BJ the Clown, face painting, music provided by a DJ, bouncy house, and pool games.

Adults \$55 per person | Ages 5 to 12 \$25
4 & under complimentary

Guests welcome | Reservations required | 48-hour cancellation
No a la carte dinner service is offered on this day.

Fall Fashion Show & Luncheon

Thursday, September 15
11:15 am Social time
11:45 am Fashion Show by Mercantile
Luncheon to follow

Join us for a showcase of fashions modeled by the ladies of Waverley.

\$50 per person | Reservations required | Guests welcome
48-hour cancellation | Clubhouse attire

Social & Dining Events

Wine Dinner featuring Nicolas-Jay Estate

Friday, September 16 | 6:00 pm Reception | 6:30 pm Dinner

The story of Nicolas-Jay spans the more than three-decade friendship between our founders, Burgundian winemaker Jean-Nicolas Méo, and music entrepreneur Jay Boberg. Their mutual love of Pinot Noir, and desire to create something lasting together, drew them to the North Willamette Valley. Their approach to winemaking is a steadfast belief in true artisanship, a passion for discovery and a deep respect for the land. They bring Burgundian traditions to winemaking while aiming to express the natural elegance of Oregon's Willamette Valley.

Join Co-Founder, Jay Boberg, for a three-course tasting dinner. Executive Chef, Juan Zaragoza, has prepared an exciting menu with all ingredients sourced within 100 miles of Waverley.

\$115 per person | Reservations required | Guests welcome
48-hour cancellation | Clubhouse attire

MENU

First Course

Deux Rabbit
Buttermilk fried rabbit
Rabbit roulade, dill beurre blanc,
pickled garden vegetables

Second Course

Lamb Ravioli
Braised lamb, lamb consommé,
chanterelles, fines herbes

Third Course

Apple Pie Ice Cream
Calvados caramel, hazelnut tuille



Sushi Night

Sunday, September 18 | 5:00 pm – 8:00 pm

Come out and enjoy sushi with family and friends. Sushi Chef, Yoshio Matsuzaki, will roll sushi to order.

Clubhouse attire | Reservations required
A la carte menu will be available

Annual Meeting

Saturday, September 24

6:15 pm Cocktails | 6:45 pm Dinner

Annual Meeting to follow

\$150 per person for lunch, tournament, & dinner

\$100 per person for dinner only

Cocktail attire | Reservations required
Members only (no spouses)

Dine & Dash Club Party

Friday, September 30 | 5:30 pm

A unique adventure that spans the property with a wandering dinner. Start with a glass of champagne and fresh hors d'oeuvres from the garden. Hop in a cart and head to the maintenance barn for dinner. Don't forget to stop at hole #4 for a drive-through cocktail and nibble. Dinner of smoked brisket, cedar plank salmon, and traditional BBQ sides to be served at the barn. Head to the 9th tee box for a quick dessert and finish Riverside North with live music.

\$75 per person | Adult only event

Guests welcome | Reservations required | 48-hour cancellation

Pitch Night & Dinner Buffet

Wednesday, October 5

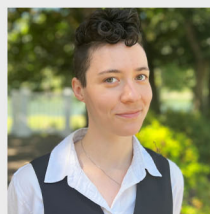
5:30 pm Dinner buffet

6:30 pm Pitch tournament

Guest couples welcome with members. Sign up as a couple or as a team of two.

Reservations required | Clubhouse attire | 48-hour cancellation
\$75 per person includes dinner & pitch buy-in | No host bar

Staff Highlight



Elizabeth Runkel *Food & Beverage Captain*

Elizabeth grew up in Salem and celebrated her first anniversary with Waverley during the Men's Invitational.

She has truly enjoyed her first year at the Club and said, "One of my favorite aspects of working in service and hospitality is making connections with people; it has been awesome being able to form a kinship with the members. My co-workers are incredible, supportive, responsible, and hilarious."

In her free time, Elizabeth has been reading textbooks for school and is currently reading *Physics for Scientists and Engineers: A Strategic Approach*, 4th Edition, by Randall D. Knight.

She is a fan of foreign films and just finished the first season of *The Bear*; her favorite movie is *The Royal Tenenbaums*.

September 2022

Sun	Mon	Tue	Wed	Thurs	Fri	Sat
				1 Pizza & Pinot Sips & Sticks Women's Pickleball	2	3 Morning Bridge High School Golf Prep
4 Member Spouse Tournament	5 Labor Day BBQ Labor Day Tournament Women's Pickleball Field House Blow Out Sale	6 Women's 18-Hole <i>Pool closes for the season</i>	7 Women's 9-Hole Past Presidents' Luncheon	8 Pizza & Pinot Women's Pickleball	9	10 Morning Bridge High School Golf Prep
11	12 Women's Pickleball	13 Women's 18-Hole	14 Women's 9-Hole Hosting PGC	15 Pizza & Pinot Fall Fashion Show Women's Pickleball	16 Wine Dinner <i>featuring Domaine Nicolas-Jay</i>	17 Morning Bridge High School Golf Prep
18 Sushi Night	19 Women's Pickleball	20 Women's 18-Hole	21 Women's 9-Hole	22 Pizza & Pinot Women's Pickleball	23	24 Morning Bridge High School Golf Prep Blyth Tournament & Annual Meeting <i>No a la carte dinner service</i>
25	26 Women's Pickleball <i>Aerification – course closed</i>	27 Women's 18-Hole Play Away <i>Aerification – course closed</i>	28 Women's 9-Hole Play Away <i>Aerification – course closed</i>	29 Pizza & Pinot Women's Pickleball	30 Dine & Dash Club Party	

October 2022

Sun	Mon	Tue	Wed	Thurs	Fri	Sat
						1 Morning Bridge High School Golf Prep
2	3	4 Women's 18-Hole	5 Women's 9-Hole Closing Pitch Night & Dinner Buffet	6 Wood Alternate Shot	7	8 Morning Bridge High School Golf Prep
9	10	11 Women's 18-Hole	12 Oktoberfest	13 Presidents' Dinner	14 Hanse Cup Tournament	15 Morning Bridge High School Golf Prep Hanse Cup Tournament
16	17	18 Women's 18-Hole Closing	19	20	21	22 High School Golf Prep Morning Bridge Lobster Night
23	24	25 Women's Annual Meeting & Luncheon <i>Last Tuesday Lunch Service for Season</i>	26	27	28 Wine Dinner <i>featuring Robert Craig Winery</i>	29 Morning Bridge High School Golf Prep
30 Halloween Party	31					